

Company : Woodside Energy Limited

Well : Somerset-1

Interval : 1184.00 - 1758.95 meters

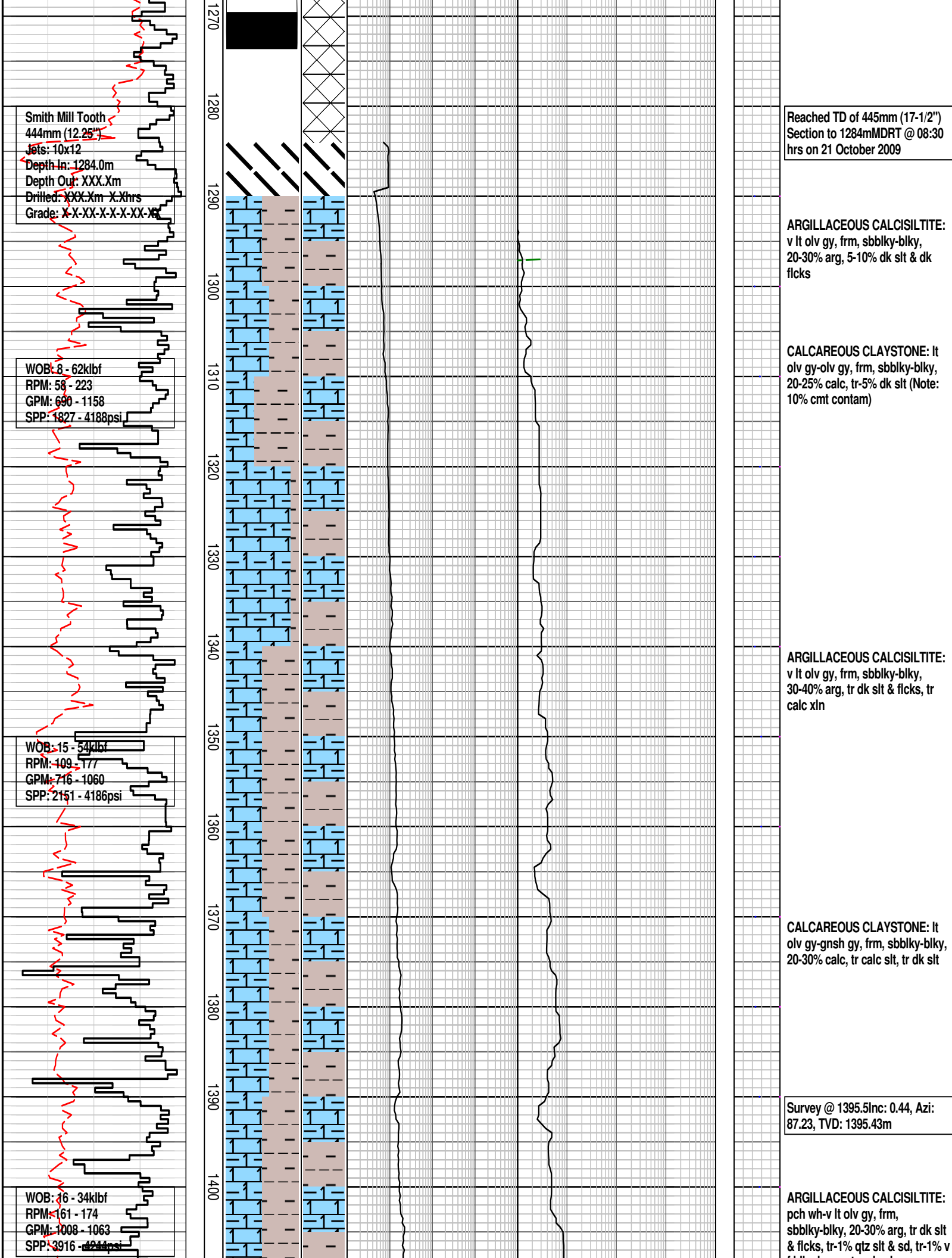
Created : 26/Oct/2009 8:38:32 AM

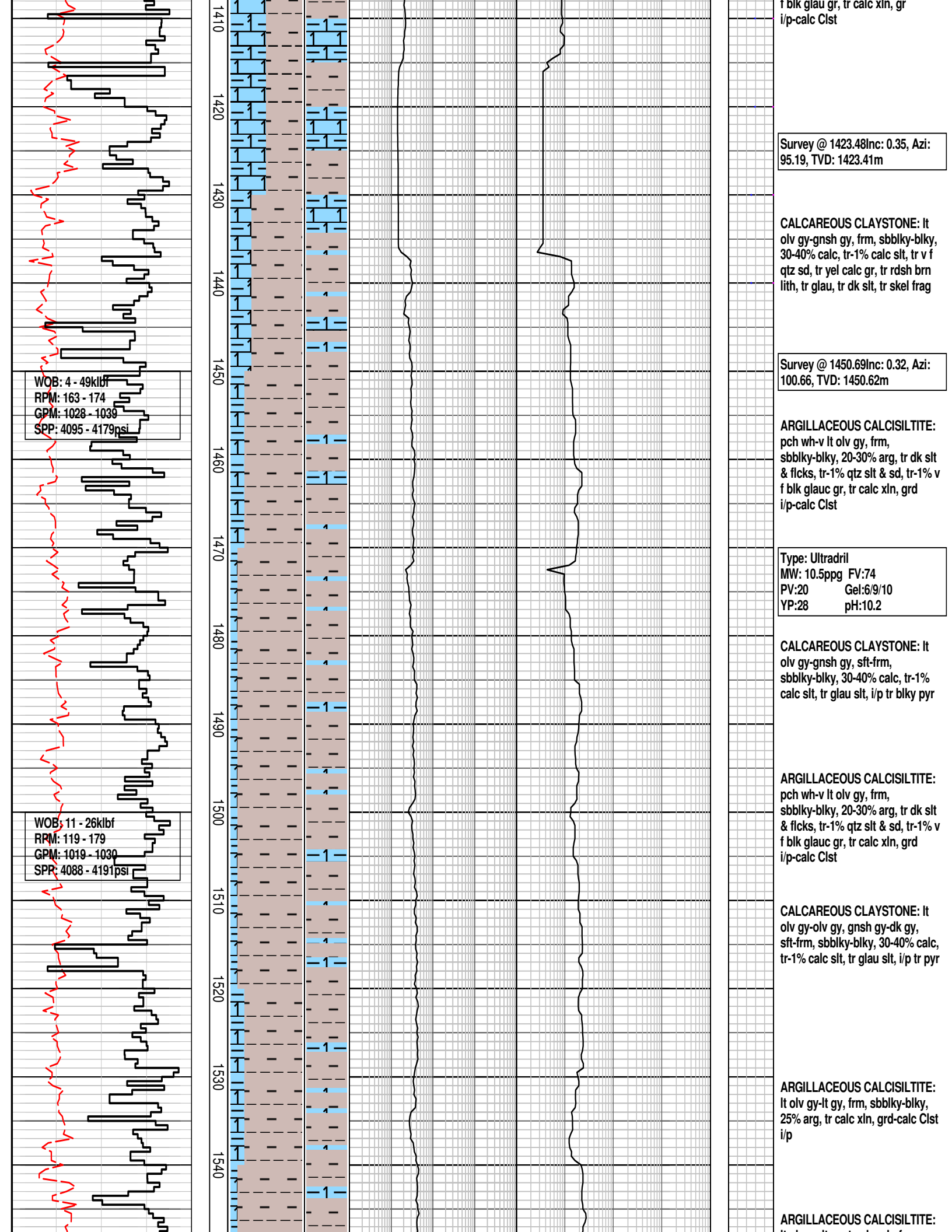


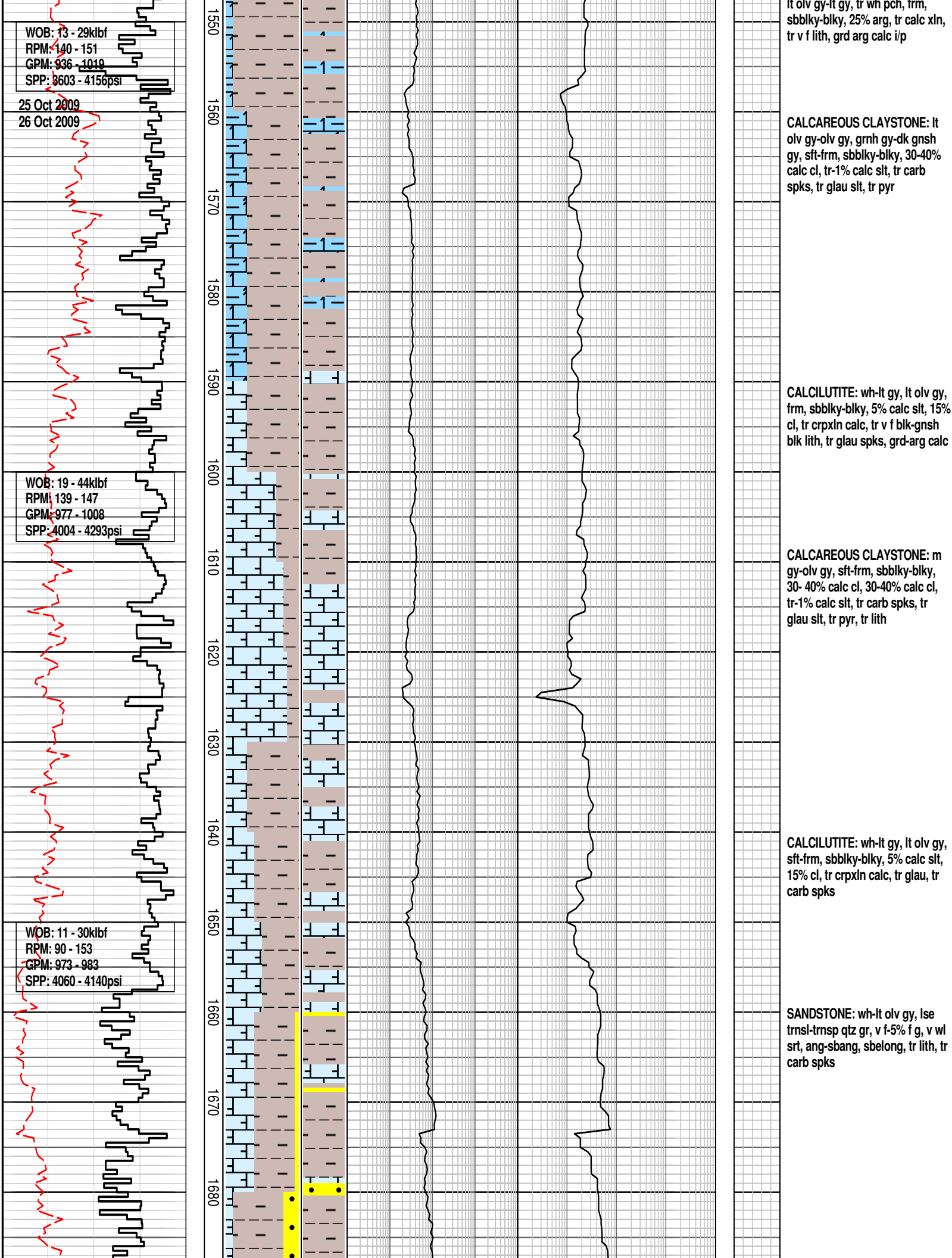
INTEQ

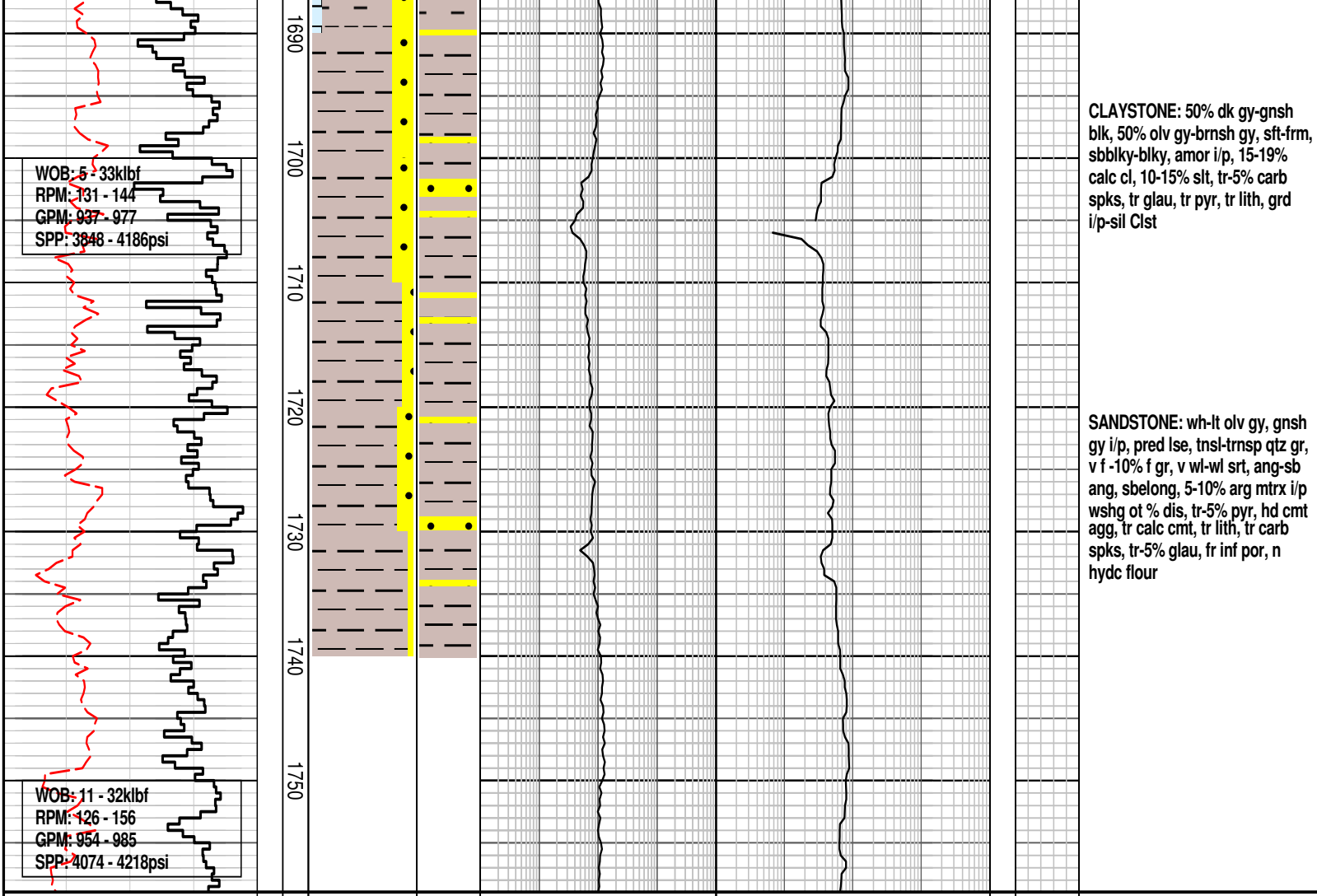
FORMATION EVALUATION LOG

		WOB (klbf)		ROP (m/hr)			MD meters 1:500		CORE	LITHOLOGY %	INTERPRETED LITHOLOGY	TOTAL GAS & RESISTIVITY Total Gas (%)	CHROMATOGRAPH Methane (%)						Ethane (%)	Propane (%)	iso-Butane (%)	n-Butane (%)	iso-Pentane (%)	n-Pentane (%)	OIL FLUORESCENCE	CALC	REMARKS
		20 40 60 80		200 150 100 50								0.01 0.1 1 10	0.01 0.1 1 10						0.01 0.1 1 10	0.01 0.1 1 10	0.01 0.1 1 10	0.01 0.1 1 10	0.01 0.1 1 10	0.01 0.1 1 10	P F G	Calcite Dolomite	
							1190 1200 1210 1220 1230 1240 1250 1260																				
		WOB: 23 - 67klbf RPM: 185 - 235 GPM: 1019 - 1185 SPP: 3441 - 4196psi																									Survey @ 1203.66Inc: 0.95, Azi: 60.78, TVD: 1203.60m
												No return to gas system															Drill with seawater and Hi-vis PHG & Gum sweeps Returns to Seabed
		WOB: 26 - 50klbf RPM: 187 - 227 GPM: 1001 - 1183 SPP: 3353 - 4165psi																									Survey @ 1251.88Inc: 0.94, Azi: 59.95, TVD: 1251.82m
												MWD (Incl and azimuth only)															Survey @ 1254.36Inc: 0.22, Azi: 29.97, TVD: 1254.29m









FORMATION EVALUATION LOG									
WOB (klbf)		MD meters 1:500	LITHOLOGY %	INTERPRETED LITHOLOGY	TOTAL GAS & RESISTIVITY	CHROMATOGRAPH	OIL FLUORESCENCE	CALC	REMARKS
ROP (m/hr)					Total Gas (%)	Methane (%)		Calcite	
20 40 60 80		CORE			0.01 0.1 1 10	0.01 0.1 1 10	P F G	20 40 60 80 100	
200 150 100 50					Ethane (%)	Dolomite			
					0.01 0.1 1 10	100 80 60 40 20			
					Propane (%)				
					0.01 0.1 1 10				
					iso-Butane (%)				
					0.01 0.1 1 10				
					n-Butane (%)				
					0.01 0.1 1 10				
					iso-Pentane (%)				
					0.01 0.1 1 10				
					n-Pentane (%)				
					0.01 0.1 1 10				